

Transportation Alternatives Set-Aside (TASA) Design Assistance



Congratulations on your selection under the 2023 Transportation Alternatives Set-Aside Program!

We know the federal process can be challenging and you may not know where to begin. McCormick Taylor can help guide you through the process of taking your project from concept to construction. McCormick Taylor has been approved by NJDOT through a Qualifications Based Selection process saving you time with procuring a consultant. You can also be assured that we are prequalified by NJDOT and have an extensive history of delivering successful projects like yours. On the following pages are a brief listing of some of our project experience under this program and similar projects.

We know how much these projects can enhance communities and the quality of life for your residents. **We can't wait to help bring your community's project to life!**

Company Overview

McCormick Taylor's engineers, scientists, and planners work together to provide a wide range of support to our clients. Established in 1946, McCormick Taylor is a leader in providing comprehensive professional services that meet the diverse needs of our clients and the communities we serve. From the onset of a project, we listen to the challenges our clients face in order to gain a thorough understanding of every project's purpose and objectives. This enables us to best develop and implement original ideas and progressive solutions that will fulfill our clients' ultimate goals.

At McCormick Taylor, we recognize the importance of multiple transportation options for communities both large and small. Giving people real mobility options expands choices available in everyday life and improves entire communities. That is why we have participated in many projects aimed at planning, designing, and implementing transit and multimodal solutions with an emphasis on enhancing mobility. We also have a strong relationship with NJDOT's Local Aid Resource Center, developing comprehensive communications efforts for the program as well as continually updating the Center's website to guide counties and local governments through the State's grant process.

Common TASA Design Services Offered



STREETSCAPE

Gateway and Wayfinding Signing, Street Furniture, Landscaping and Green Infrastructure



BICYCLE AND PEDESTRIAN FACILITIES

Sidewalks, Exclusive Bike Lanes, Shared Use Paths and Trails, Pedestrian Refuge Islands



ADA COMPLIANCE

Curb Ramps and Detectable Warning Surfaces, Sidewalks, Pedestrian Countdown Heads and Pushbuttons



TRAFFIC CALMING

Intersection Bulb-Outs, Raised Crosswalks and Intersections, Speed Cushions



TRAFFIC SIGNAL

New/Upgraded Traffic Signals, LED Signal Heads and Backplates, Pedestrian Flashing Beacons, High-Intensity Activated Crosswalk Beacons (HAWK)



ROADWAY AND TRAFFIC

Intersection Widening, Turning Lane Improvements, Pavement and Drainage Improvements, Roadside Safety



LIGHTING

Ornamental Lighting, Pedestrian Scale Lighting



STRIPING AND PAVEMENT MARKINGS

High-Visibility Crosswalks, Road Diets, Share the Road Markings

NJDOT Transportation Alternatives Design Assistance Projects | McCormick Taylor provides professional engineering services to municipalities who have received Federal Aid Highway Program Funds through its Transportation Alternatives Set-Aside (TASA) Program. With our extensive knowledge of the TASA Program, we are able to successfully deliver high-quality design services while assisting municipalities with navigating through the difficult process of completing a federally funded project.

Pennsauken-Merchantville Multiuse Trail, Pennsauken Township, Camden County, NJ



The purpose of this project is to utilize vacant and blighted railroad right-of-way to create additional recreational opportunities, encourage alternative modes of transportation, and provide

connections to nearby destinations. McCormick Taylor was chosen to design Pennsauken Township's first phase of the multiuse rails-to-trail trail which will be a part of the Camden Active Trail Network. The ½ mile trail utilizes existing abandoned railroad right-of-way adjacent to Chestnut Avenue. The trail also includes a new trail crossing at Cove Road with pavement markings, ADA-compliant curb ramps, a high-visibility crosswalk, and a pedestrian flashing beacon. Additional trail enhancements include tree plantings, landscape improvements, lighting, and rest areas.

Lenola Town Center Improvements, Moorestown Township, Burlington County, NJ



The Lenola Area of Moorestown has many attributes of a successful neighborhood town center but lacks the connectivity to reach its potential. This project provides increased

connectivity via bike lanes, enhanced sidewalks and crosswalks, a bus shelter, and traffic calming strategies to create a safe and inviting streetscape.

McCormick Taylor prepared the design and bid package and is currently assisting Moorestown Township with the Construction Engineering Services for this downtown streetscape project. The new street design, created by McCormick Taylor, includes narrower travel lanes to accommodate for two dedicated bike lanes, attractive and ADA-compliant sidewalks, decorative crosswalks, bus stops and bus shelters, lighting, bicycle parking, benches, raised medians, gateway signs, and landscape plantings.

Downtown Redevelopment Along Kinderkamack Road, Emerson Borough, Bergen County, NJ

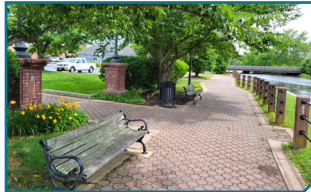


This is a streetscape and pedestrian safety improvement project in Emerson Borough in Bergen County. Kinderkamack Road, also known as County Route 503, provides access to the

NJ Transit Pascack Valley Line for area commuters. The project beautifies the downtown business and shopping district and encourages more pedestrian traffic. Pedestrian improvements are proposed to enhance the safety of shoppers and students crossing Kinderkamack Road.

The project scope includes the replacement of existing curb, concrete sidewalk and brick paver strip, ADA-compliant curb ramps with detectable warning surfaces, benches, trash receptacles, decorative street lighting, and signs.

Millyard Riverfront Walk, City of Millville, NJ



The Millyard Riverfront Walk Project primarily consists of constructing a ½ mile pedestrian link from the existing Riverfront Park at Brandriff Avenue to the Union Lake Ballfield and beach area

at Union Lake Park. The walk would include a 10-foot wide concrete paver walkway with decorative lighting, benches, railing, landscaping, signage, bike racks, and trash receptacles. Other segments will be narrow paths with a mix of surfaces. The trail would continue toward a historic hydro-powerplant, where a plaza and overlook site would provide views of this historic structure and the scenic Maurice River. The northwestern-most segment would continue from the hydro-power plant along historic canals and raceways. At the terminus of the trail, would be bike racks, a stone parking area, a smaller paved area for handicap accessible parking, and split rail style fencing and vegetative buffer. This project represents an extension of the existing river-walk on the northeast side of the Maurice River, which in turn connects, via a pedestrian bridge, to the bikeway trail system on the southwest side of the Maurice River.

Heritage Trail Shared Use Path & On Road Improvements, Edgewater Park, NJ



The proposed improvements include providing a continuous one-mile path of combined on and off-road path for safe travel to four existing parks/ recreation fields, a nearby school, and the NJ Transit

Light Rail. Safety improvements include installing a Rectangular Rapid Flashing Beacon, wayfinding signs and striping, replacing all curb ramps, restriping at intersections, and replacing all non-compliant ADA infrastructure. The project will greatly affect the quality of life for residents in the project area as well as promote the use of alternative modes of transportation for travel. Residents in the area will have a scenic way to commute to the nearby NJ Light Rail Line and visit local businesses and parks.

Broad Avenue Complete Streets Improvement Project, Leonia Borough, Bergen County, NJ



Broad Avenue runs the full length of Leonia Borough in Bergen County and is the busiest street in the Borough. The goal of the project is to increase safety and introduce traffic calming

measures to enhance pedestrian and bicycle access. Leonia's middle school, elementary school, business district, municipal building, parks, and residential areas are located along Broad Avenue. Receiving traffic from I-95, I-80, Route 46, and Route 4, Broad Avenue serves as a cut-through for traffic to the George Washington Bridge. The project provides an engineered approach to slow speeds and increase safety for all users.

The project provides colored bicycle lanes, curb extensions and crosswalks, a painted center median with a pedestrian crossing island, a rapid rectangular flashing beacon, pedestrian crossing/warning signs, a raised gateway treatment, and additional sidewalk to complete gaps.

NJDOT Safe Routes to School Design Assistance Projects | McCormick Taylor was selected by NJDOT to assist Local Public Agencies awarded grants under the Federal-Aid Safe Routes to School (SRTS) Design Assistance Program. The SRTS Program is a similar federally funded competitive grant program to improve the ability and opportunity for students to safely walk and bike to school.

Woodstown Borough Sidewalk, Crosswalk, and Signalization Improvements, Salem County, NJ



This phased project creates a safer route of transportation for students who attend and walk to the elementary and middle schools of Woodstown in Salem County, NJ. Improvements designed by McCormick Taylor include a defined crossing area for students, new sidewalks with ADA-compliant curb ramps, marked crosswalks, and flashing pedestrian crossing signs on routes to the school. The project also includes a continuous pedestrian path with defined and visible crossing locations. The first phase is located adjacent to the Mary S. Shoemaker Elementary School and the second phase is located along Bailey Street, Old Salem Road, and Alloway Road.

ADA-compliant sidewalks and ramps were required to allow students with disabilities to travel to school on their own, which was challenging considering the existing conditions. The addition of flashing pedestrian signs increase driver awareness of pedestrians. This will allow for a safe method of travel for all students and pedestrians alike at dangerous crossing locations. The improvements helped improve pedestrian safety throughout the project limits and supports the goal of Woodstown's Complete Streets Policy.

Eastampton Township Multiuse Path and Walking Route Improvements, Burlington County, NJ



Located adjacent to the Eastampton Community School, this SRTS project includes a multiuse path. McCormick Taylor designed the path to provide links to multiple destination points and existing paths in the area including Clive Park, residential areas, the Manor House Municipal Building, the school parking lots, and the path to Nottingham Way. The project also addresses damaged sections of sidewalk, the installation of ADA-compliant curb ramps, and crosswalks to enhance walkability in the area.

The purpose of the project is to improve safety along roadside walking and biking routes to the school. The multiuse path improves bicycle and pedestrian safety by providing exclusive off-road facilities as described in the Eastampton Township 2015 Pedestrian Circulation Plan. The project improves the walking and biking environment for all users and encourage walking and biking to school.

Maple Shade Township Pedestrian Safety Improvements, Burlington County, NJ



The purpose of this project is to enhance pedestrian walkability in the vicinity of Maple Shade High School by installing crucial missing sections of sidewalk, ADA-compliant curb ramps, and crosswalks. Frederick Avenue is a major component to the pedestrian circulation network, which connects residential areas with both Maple Shade High School and the Maude Wilkins Elementary School. Pedestrian improvements are anticipated primarily on South Clinton Avenue and Frederick Avenue.

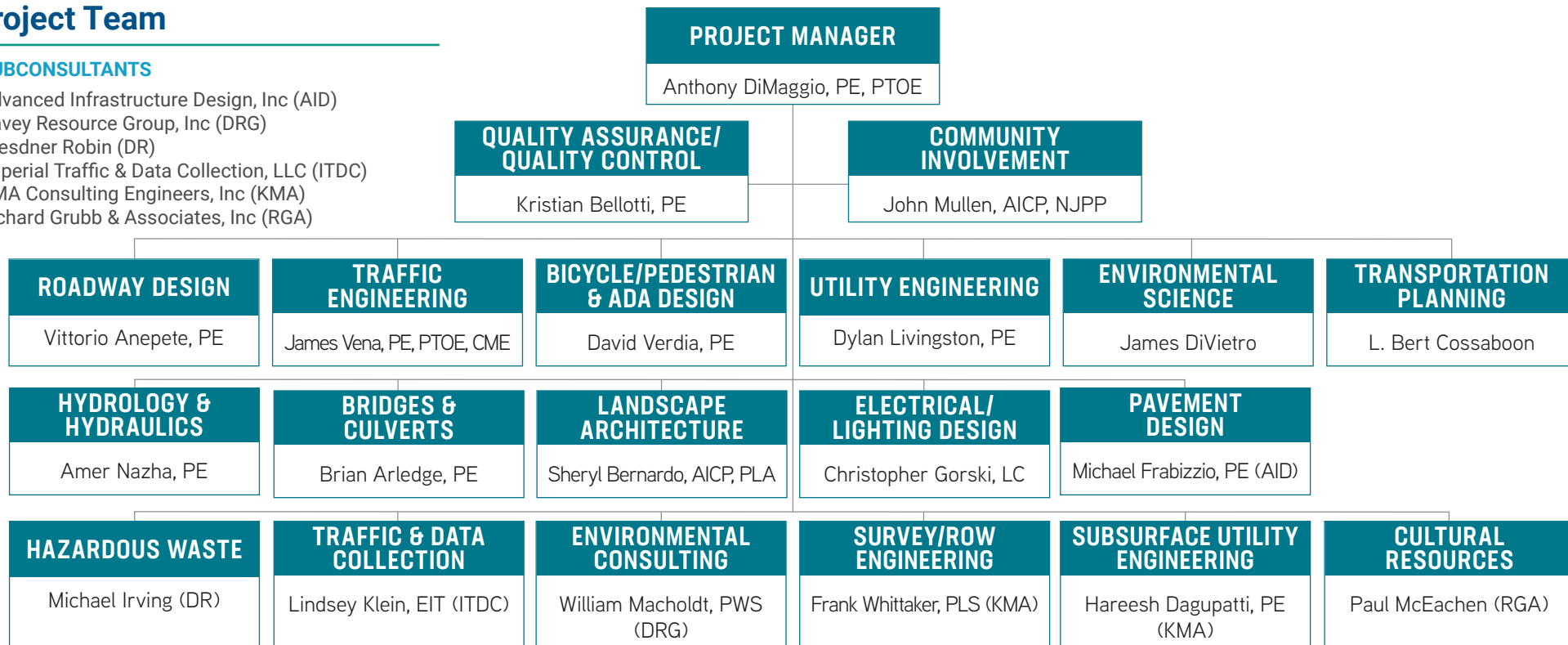
The project improved safety for pedestrians commuting to Maple Shade High School, consisting of approximately 850 students from grades 7-12. In addition, Maude Wilkins elementary school educates approximately 401 students in grades PK-4, of whom approximately 9% currently walk or bicycle to school. The primary obstacle preventing students from walking or biking to school were missing sections of sidewalk in residential areas surrounding the school. The previous existing incomplete connections through missing sections of sidewalk contributed to real and perceived risks for children walking or bicycling in the area.

McCormick Taylor has already been approved by NJDOT through a Qualifications Based Selection process, saving you time with procuring a consultant. We have an extensive history of delivering successful projects like yours and will guide you through the federal process.

Project Team

SUBCONSULTANTS

Advanced Infrastructure Design, Inc (AID)
 Davey Resource Group, Inc (DRG)
 Dresdner Robin (DR)
 Imperial Traffic & Data Collection, LLC (ITDC)
 KMA Consulting Engineers, Inc (KMA)
 Richard Grubb & Associates, Inc (RGA)



ANTHONY DIMAGGIO, PE, PTOE | PROJECT MANAGER
 D 856.206.5317 | C 856.304.3908
amdimaggio@mccormicktaylor.com

Mr. DiMaggio is the Office Manager of McCormick Taylor's Mount Laurel, NJ office and has served as the Project Manager for our recent SRTS and TASA contracts with

NJDOT. He has extensive experience in the planning, design, and management of transportation improvements projects in New Jersey. Mr. DiMaggio has a strong background in traffic engineering, as well as proficiency with roadway design, preparation of specifications, quantities, and cost estimates and preparation of traffic control plans. He is well-versed in all aspects of transportation improvement projects, allowing him to interface effectively between various highway design, drainage, traffic, and environmental issues that may arise. He has successfully completed project scoping and final design efforts on various NJDOT Local Aid projects over his 30-year career. He currently lives in Gloucester County.



VITTORIO ANEPETE, PE | ROADWAY DESIGN
 D 856.206.5300 | C 609.618.3549
vmianepete@mccormicktaylor.com

Vittorio Anepete is a Manager in the Transportation Department of McCormick Taylor's Mount Laurel, NJ office and served as the Roadway Lead for our recent SRTS and

TASA contracts with NJDOT. He is responsible for scoping, planning, design, and delivery of large-scale transportation projects. He has served as Project Manager and Lead Highway Engineer on all phases of NJDOT Capital Program Management and Local Aid projects. He has successfully guided numerous municipalities through the federal aid design process to implementation. He is a Professional Engineer licensed in New Jersey and Pennsylvania with over 18 years of transportation experience including complete streets, pedestrian and bicycle accommodation, and active transportation. Mr. Anepete is passionate about community engagement having served on his local Housing Authority, Land Use Board, Homeowner's Association, and Economic Development Advisory Commission. He has lived in New Jersey his entire life and currently lives in Burlington County.

Contact our Project Manager or Roadway Design Lead to learn more about our services!